

CERTIFIED LAND CORNER RECORDATION

DESCRIPTION OF CORNER EVIDENCE FOUND, AND ORIGINAL RECORD (If known)

LOCATION Found nothing @ the corner. Found W C stones to south and to southwest. Set 1/2" pipe @ corner from W C Stones.

4/3
9/10

G.L.O. record - unknown

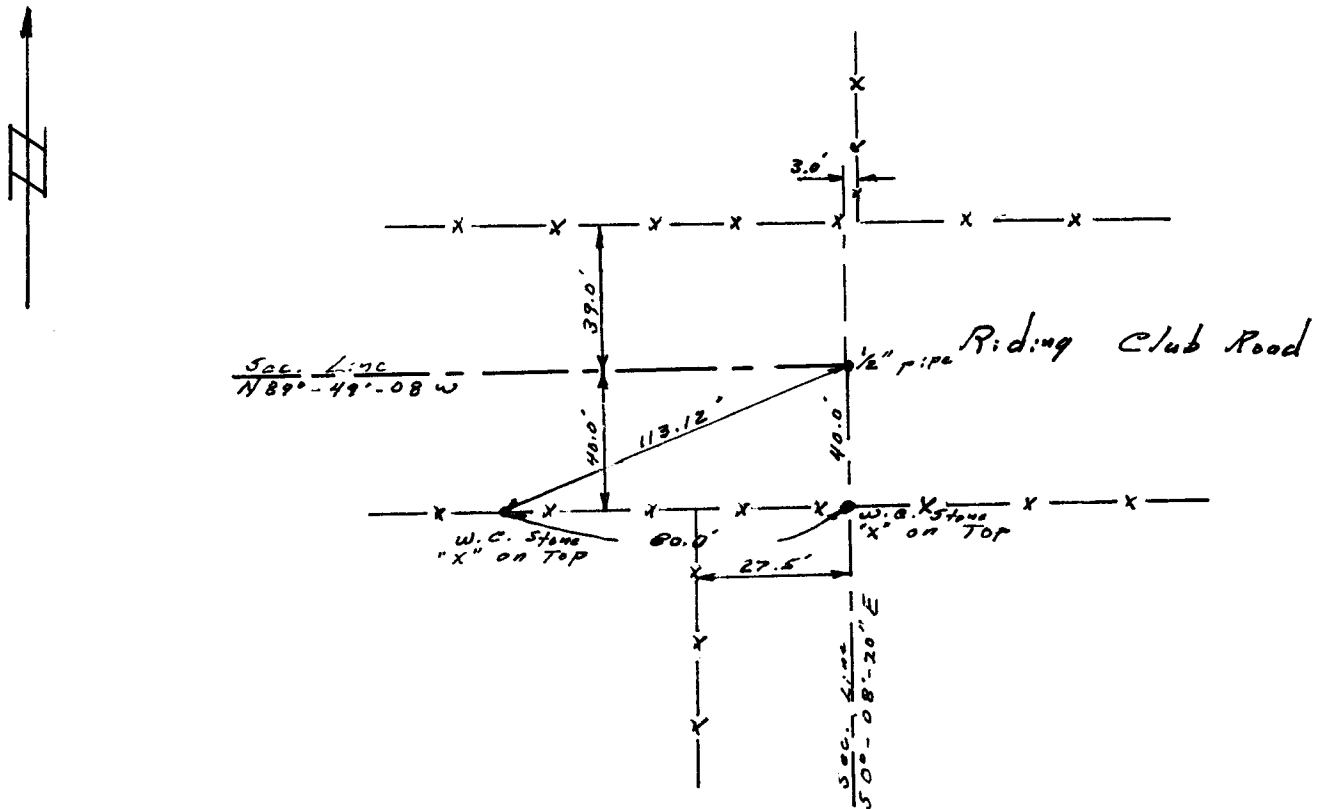
T 14 N, R 66 W
6th P.M.

DESCRIPTION OF MONUMENT AND ACCESSORIES ESTABLISHED TO PERPETUATE THE ORIGINAL LOCATION OF THIS CORNER:

Se 1/2" pipe at corner, 6" below surface of road.

Witness corners are granite "WC" stones with x on top set 40.0 feet south and 113.12 feet sw.

SKETCH, WITH COURSE AND DISTANCE TO ADJACENT CORNER IF DETERMINED IN THIS SURVEY.
(May Sketch or Paste Reproduction on Reverse Side.)



I, Robert C. Corbet certify that I have carefully performed or reviewed the work done on the diagrammed corner as reported on this recordation form and approve the same.

Robert C. Corbet 495
Signature of Surveyor Registration No.

STATE OF WYOMING,
Office of Clerk and Recorder,
County of Taramie

This "corner record" was filed for record on the 6 day of January, 1974, was noted on the cross-index plat and is assigned page No. _____, in book No. _____

James C. Whitehead
County Official

Cross Index No. <u>E13</u>	T. <u>14</u>	R. <u>66</u>	<u>6</u> Mer.
_____	T. _____	R. _____	Mer.
_____	T. _____	R. _____	Mer.
_____	T. _____	R. _____	Mer.
_____	T. _____	R. _____	Mer.
_____	T. _____	R. _____	Mer.
_____	T. _____	R. _____	Mer.